

FORD RANGER WORKSHOP



VEHICLE SUMMARY

Heavy duty multi-purpose mobile workshop with remote offroad operational capability. Adaptable workshop unit with multiple storage and equipment configurations.

MODIFICATION FEATURES



Vehicle Detail

Manufacturer	Ford
Model	Ranger Single Cab
Drivetrain	4x4
Engine Type	Diesel 2.2L
Power (PS/kW)	120/88 @ 3700 rpm
Torque (Nm)	285 @ 1500 - 2500 rpm
Induction	Turbocharged
Transmission	5-Speed manual
Wheels	16" steel wheel
Tires	255/70R16

Dimensions of Modified Vehicle (mm)

Length	5274
Width	1850
Height	1703
Angle of approach (degree)	28
Wheelbase	3220
Track (front & rear)	1560
Minimum ground clearance	230
Turning circle (m)	12

Weight Table (kg)

Base vehicle kerb weight	1762
Modified vehicle kerb weight	2995
Gross vehicle weight	3200

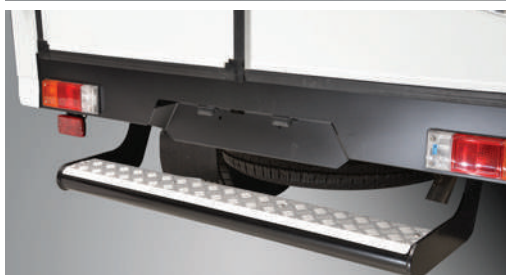
Contact Global Fleet Sales for more information or a quotation.

✉ inquiries@globalfleetsales.net 🌐 ford.globalfleetsales.net

MEMBER OF RMA GROUP

GFS
GLOBAL FLEET SALES





STANDARD FEATURES

Workshop cabin

Twin rear access doors with windows

Rear access step

Workshop shelving

Workbench

Auxiliary AC power socket

220v electrical system

Heavy duty suspension

OPTIONAL FEATURES

Retractable side awning

Rear fog light

Rear workshop heater

Roof ventilation fan

Hydraulic jack (5 tonne)

Axle stands (6 tonne)

Portable generator (3kVA)

Portable engine lifting crane

Gas cutting & welding equipment

Air compressor (9CFM)

Air hose and reel

Air drill

Impact wrench (1/2" drive)

Workshop shelter (8mx4m)

Hi-Lift jack (cabin mount)

Tow rope

Tool set (metric)

12v battery charger

Grease pump

Roll over protection system

Underbody anti-corrosion

Heavy duty side step

Heavy duty side step & side rail

Underbody protection

Window tinting

Bullbar

Front headlight protection

Towbar (ball) & trailer plug

Winch (10,000lbs/4,500kg)

Mud terrain tyres

All terrain tyres

Brake pad upgrade

Brake system upgrade (disc & pads)

Headlight on system

LED lightbar (roof mount)

LED driving lights (requires LED lightbar)

LED reversing lights (requires LED lightbar)

Beacon light (amber - roof mounted)

Radio (Motorola 360 COMMS)

Radio (CODAN)

Halogen search light (requires LED lightbar)

Front fog lights

Speed limiter

Battery isolator switch (lockable)

Deep cycle battery (secondary)

Heavy duty battery (main)

Rear view camera

Reversing alarm (beep)

Coolant block heater

Long range fuel tank (115L)

Air intake snorkel

Air intake snorkel with pre-cleaner

Enhanced fuel filtration system (available with audible water-in-fuel alarm)

Coolant level alarm

Fire extinguisher (choice of 1kg or 2.5kg)

Claw hammer (cabin mount)

Recovery pack

Wheel nut indicators

Safety kit (warning triangle & first aid kit)

Canvas seat covers

Rubber floor mats

Notes:

- The company reserves the right to change the vehicle specifications and features described in this publication at any time
- Vehicle specifications and features may vary in different markets
- Images are for illustrative purposes only and may appear different to the actual vehicle

Contact Global Fleet Sales for more information or a quotation.

✉ inquiries@globalfleetsales.net 🌐 ford.globalfleetsales.net

MEMBER OF RMA GROUP

GFS
GLOBAL FLEET SALES

