

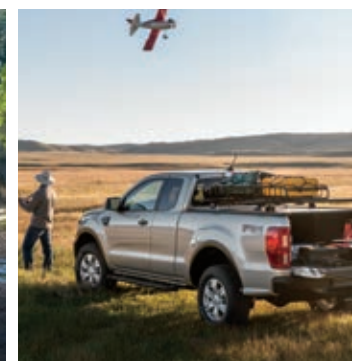
# 2021 FORD RANGER®





# ADVENTURE STARTS HERE.

This is about way more than a pickup truck. It's about you. Exercising your freedom. Getting outdoors, and recharging yourself with the kinds of challenging – and rewarding – activities you call fun. You've got the spirit and determination. Now, it's time to get the gear: the 2021 Ford Ranger® pickup. Backed by generations of rugged know-how, Ranger trucks are Built Ford Tough® for the freedom-seekers of America. You'll find popular interior amenities and robust new 18" wheels in the available new STX™ Special Edition Package (shown). Also new for 2021, the highly anticipated available TREMOR® Off-Road Package combines an upgraded suspension featuring FOX™ dampers tuned by Ford with aggressive off-road tires and much more to bring you the ultimate off-road Ford Ranger.



**XL SUPERCREW® 4x4.** Race Red. Available new STX Special Edition Package. Available and aftermarket upfit equipment. Always consult the owner's manual before off-road driving, know your terrain and trail difficulty, and use appropriate safety gear. Vehicle imagery throughout this brochure may be computer-generated and may include available and aftermarket equipment.

**DEP**  
DEALER ePROCESS



# TOUGHNESS RUNS DEEP.

There's no doubt Ranger® pickups meet legendary Built Ford Tough® standards. For starters, the backbone of every Ford Ranger is a fully boxed, high-strength-steel frame with 6 rugged crossmembers. In the available FX4™ Off-Road Package, you'll find a steel bash plate and additional skid plates that are mounted directly to the frame – so they can take the hit. Not your radiator, transfer case or steering gear. Ranger pickups also get a double-wishbone front suspension with rugged coil springs and front monotube shocks to help optimize ride and handling. Rear parabolic leaf springs help provide the right mix of ride quality, durability and capability.

Rest assured, we developed this Ranger pickup specifically for American truck buyers. And we tortured every component – from its high-strength-steel frame to its EcoBoost® engine to its cloth or available leather-trimmed seating – to help ensure Ford Ranger is ready for any season and nearly any terrain.



XLT SUPERCAB™ 4x4, Velocity Blue Metallic. Available FX4 Off-Road and Black Appearance Packages. Available equipment.



# FUN ON DEMAND.

## TURBOCHARGED 2.3L ECOBOOST.®

Every Ford Ranger® truck comes equipped with a versatile and powerful gas powertrain. The 2.3L EcoBoost engine's 16-valve design features chain-driven dual overhead cams, a twin-scroll turbocharger, and an overboost function for fun with every gear change. The class-exclusive¹ 10-speed SelectShift® automatic transmission, featuring Ford patented technology, optimizes gear progressions and delivers smooth, quick shifting up and down the gearbox.

**BEST GAS TORQUE**  
**310 LB.-FT.**  
IN THE CLASS¹

**BEST-IN-CLASS**  
**1,860 LBS.**  
MAX. AVAILABLE PAYLOAD²

**270 HP**  
STANDARD

**7,500 LBS.**  
MAX. AVAILABLE TOWING³

**LARIAT™ SUPERCREW® 4x4**, Oxford White. Available FX4™ Off-Road, Chrome Appearance, and Trailer Tow Packages. Available and aftermarket upfit equipment. (Max. Payload 1,560 lbs. and Max. Towing 7,500 lbs.)

1. Class is Midsize Pickups. 2. Max. payload of 1,860 lbs. on SuperCab™ 4x2 with available Trailer Tow Package (not shown).

3. Max. towing of 7,500 lbs. with available Trailer Tow Package. 4. From "2020 Ford Ranger SuperCab Expert Review" on Kelley Blue Book's KBB.com.

NOTE: Maximum payload and towing capabilities shown throughout this brochure are for properly equipped base vehicles with required equipment and a 150-lb. driver and vary based on cargo, vehicle configuration, accessories and number of passengers. See Weight Ratings chart in the Specifications section for maximum ratings by configuration. See label on door jamb for carrying capacity of a specific vehicle. Horsepower, torque, payload and towing are independent attributes and may not be achieved simultaneously. For additional information, see your Ford Dealer. Always consult the owner's manual before off-road driving, know your terrain and trail difficulty, and use appropriate safety gear.

**“... the Ranger GETS UP AND GOES WITH AUTHORITY, even when fully loaded with people and gear.”**

— Kelley Blue Book's KBB.com⁴





# GO THERE.

And keep on going — with the available FX4™ Off-Road Package.<sup>1</sup> Ranger® FX4 trucks include a prominent steel bash plate up front and grip-enhancing off-road tires at all 4 corners. For even more bite, fit yours with the available LT-rated tires. FX4 trucks also feature the Terrain Management System,<sup>2</sup> Trail Control,<sup>2</sup> an off-road tuned suspension, an electronic-locking rear differential, 3 skid plates, and an off-road display in the instrument cluster. Don't need a full-on 4x4? The available FX2 Package<sup>1</sup> gives Ranger 4x2s exposed front tow hooks, an off-road tuned suspension, off-road OWL tires, an electronic-locking rear differential, an off-road display and more. Ford Ranger is ready to help you prove that tough has more fun.

**XLT SUPERCAB™ 4x4**, Iconic Silver Metallic. Available FX4 Off-Road and Sport Appearance Packages. Available and aftermarket upfit equipment. Always consult the owner's manual before off-road driving, know your terrain and trail difficulty, and use appropriate safety gear. Try to avoid water higher than the bottom of the hubs and proceed slowly. Refer to your owner's manual for detailed information regarding driving through water.

**1.** Restrictions may apply. See your dealer for details. **2.** Driver-assist features are supplemental and do not replace the driver's attention, judgment and need to control the vehicle. It does not replace safe driving. See owner's manual for details and limitations.



#### RUGGED STEEL BASH PLATE

A 16-gauge, high-strength-steel bash plate helps protect your radiator and other key vehicle components from damage caused by rock strikes, road debris and more.

Included in available FX4 (shown) and TREMOR® Off-Road Packages

#### TERRAIN MANAGEMENT SYSTEM

Works in both 4H and 4L for seamless shift-on-the-fly confidence over all sorts of surfaces. Just tap the “TM” button to switch modes:

- NORMAL
- GRASS/GRAVEL/SNOW
- MUD/RUTS
- SAND

Included in available FX4 and TREMOR Off-Road Packages



#### TRAIL CONTROL

Designed for low-traction, off-road conditions, this feature acts as a low-speed cruise control.<sup>2</sup> It can be engaged in 2H, 4H or 4L, and with any of the 4 Terrain Management System modes.

Included in available FX4 and TREMOR Off-Road Packages



#### ELECTRONIC-LOCKING REAR DIFFERENTIAL

Engaging the e-locker in low-traction situations locks the rear wheels together, then splits torque evenly between them.

Available on XL, XLT and LARIAT,<sup>2</sup> or included in available FX4 and TREMOR Off-Road and FX2 Packages



**LARIAT SUPERCREW® 4x2**, Velocity Blue Metallic. Available FX2 and Sport Appearance Packages. Available equipment.



# GET A GRIP.

## NEW TREMOR® OFF-ROAD PACKAGE.

Turn your truck into the ultimate off-road Ranger® pickup in a snap. This available new package pulls all the best Ranger pickup off-road goodies together for you. Then it goes further with unique features like an off-road tuned suspension with FOX™ dampers, plus big, aggressive tires on sturdy 17" rims. You can even add available bodyside and hood graphics.<sup>1</sup> With 9.7" of ground clearance, TREMOR trucks are built to take rough terrain in stride. The suspension is painstakingly tuned for off-road confidence and capability, along with a relaxed on-road ride. Spring and anti-roll bar stiffness, suspension travel rates, unique 3+1 multi-leaf rear springs, and a raised truck body are more ways TREMOR pickups earn their spot at the top of this year's Ford Ranger lineup. It's time to get your game on.

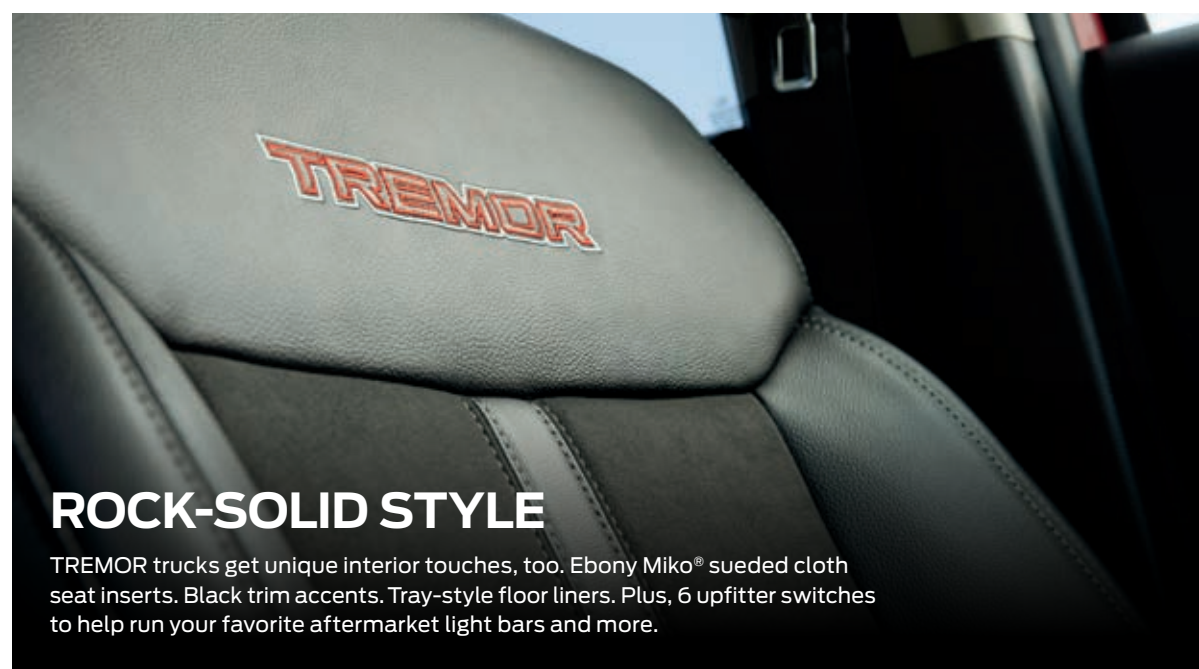


### TREMOR HIGHLIGHTS

- Off-Road Tuned Suspension, including FOX™ 2.0 Monotube Dampers with Rear Piggyback Reservoirs
- Skid Plates, Electronic Locking Rear Differential, Terrain Management System™ and Trail Control™
- Off-Road Hoop Steps
- Red Accent Nostrils on Grille
- Black Exposed Steel Bash Plate
- "TREMOR" Box Decal

### KEY STATS

Ground clearance	9.7"
Approach angle	30.9°
Breakover angle	24.2°
Departure angle	25.5°
Track (front/rear)	62.4"/62.4"
Suspension travel (front/rear)	
Jounce	4.01"/4.17"
Rebound	2.52"/3.94"
Total	6.53"/8.11"



### ROCK-SOLID STYLE

TREMOR trucks get unique interior touches, too. Ebony Miko® sueded cloth seat inserts. Black trim accents. Tray-style floor liners. Plus, 6 upfitter switches to help run your favorite aftermarket light bars and more.



### OFF-ROAD READY

The aluminum-bodied rear dampers feature an external reservoir designed to increase fluid capacity and help keep the system operating at its best while you put your TREMOR pickup through its paces.

**XLT SUPERCREW® 4x4.** Oxford White. Available new TREMOR Off-Road Package and TREMOR Body-Side and Hood Graphics. Available equipment. Always consult the owner's manual before off-road driving, know your terrain and trail difficulty, and use appropriate safety gear.

<sup>1</sup>. Select exterior colors only.





#### DUAL 4.2" PRODUCTIVITY SCREENS

These available screens serve up information related to your fuel efficiency, driver-assist features and MyKey® programming.

#### SYNC® 3 WITH 8" TOUCHSCREEN¹

Easily access phone and audio, as well as available climate and navigation settings, with this available feature.

#### B&O™ SOUND SYSTEM

This available feature pumps 660 watts of amplified power through 10 specifically placed speakers for an exhilarating listening experience.

#### DUAL-ZONE CLIMATE CONTROL

Separate cabin temperature settings for you and your front passengers can be maintained by this available system.

#### SMART-CHARGING USB PORTS

Easily charge your devices with these conveniently located available ports.

#### 10-SPEED SELECTSHIFT® AUTOMATIC TRANSMISSION

Helps ensure Ranger pickups use the right gear at the right time. Also lets you toggle gears up or down if you prefer.

# YOUR TOOLS.

## GEARED TOWARD ADVENTURE.

Ranger® trucks offer the right set of features for your memory-making journeys. The available Intelligent Access with push-button start lets you unlock, lock and start your truck with the key fob tucked in your pocket. A tilt and telescoping steering column easily adjusts to your liking. Plus, covered storage beneath the padded center armrest and a lockable glove box provide plenty of room to stow your phone and other essentials. Then you're off to good times.

**LARIAT™ SUPERCREW® 4x4.** Medium Stone leather-trimmed front and outboard rear seating. Available equipment.

1. Don't drive while distracted. Use voice-operated systems when possible; don't use handheld devices while driving. Some features may be locked out while the vehicle is in gear. Not all features are compatible with all phones.

**DEP**  
DEALER ePROCESS

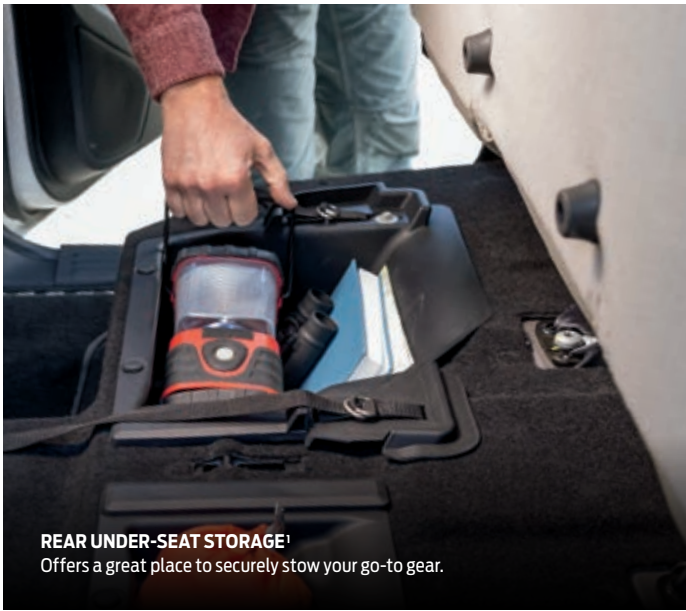




**HEATED SIDEVIEW MIRRORS**  
Enjoy convenient power-folding operation, plus security approach lamps with these available mirrors.

**8-WAY POWER, HEATED DRIVER'S SEAT**  
Get comfortable with the help of available 8-way power functionality, including power lumbar.

**SLIDING REAR WINDOW**  
This available feature includes privacy tint and an electric defroster for quick clearing.



**REAR UNDER-SEAT STORAGE<sup>1</sup>**  
Offers a great place to securely stow your go-to gear.

# YOUR CABIN.

## ROOMY AND COMFORTABLE.



Filled with just the right amenities. Ranger® SuperCrew® trucks seat up to 5, offering you a 3-passenger rear bench seat with a fold-down center armrest and 2 cupholders, plus convenient under-seat storage. SuperCab™ trucks feature 2-passenger rear seating with covered under-seat storage, giving them the ability to seat up to 4 people total. For more cargo space, you can opt to delete the SuperCab rear seats, or remove them on your own as needed. Available features like an engine block heater and a rear-window defroster can help in cold climates. In this cabin, the forecast is always for fun.

**LARIAT™ SUPERCREW 4x4.** Medium Stone leather-trimmed front and outboard rear seating. Available equipment.  
1. Varies by SuperCab or SuperCrew (shown).



# YOUR TECH.

## CONNECTED YOUR WAY.

Before the mud dries on your gear, you can be posting adventure videos from the tailgate of your Ranger® pickup using the 4G LTE Wi-Fi hotspot capability.<sup>1</sup> Inside, available voice-activated SYNC® 3 puts just what you need on the tip of your tongue – or at your fingertips thanks to a vibrant 8" touchscreen.<sup>2</sup> You can also speak to Siri®<sup>3</sup> or Google™<sup>3</sup> using your paired smartphone to stay connected while helping keep your eyes on the road – and your hands on the wheel.

**LARIAT™ SUPERCAB™ 4x2.** Carbonized Gray Metallic. Available Sport Appearance Package. Available equipment. Don't drive while distracted. Use voice-operated systems when possible; don't use handheld devices while driving.

**1.** Wi-Fi hotspot includes complimentary wireless data trial that begins upon AT&T activation and expires at the end of 3 months or when 3GB of data is used, whichever comes first, but cannot extend beyond the complimentary subscription period for remote features. To activate, go to [www.att.com/ford](http://www.att.com/ford). **2.** Some features may be locked out while the vehicle is in gear. Not all features are compatible with all phones. **3.** Requires phone with active data service and compatible software. SYNC 3 does not control 3rd-party products while in use. 3rd parties are solely responsible for their respective functionality. **4.** FordPass Connect, the FordPass App, and complimentary Connected Service are required for remote features (see FordPass Terms for details). Connected service and features depend on compatible AT&T network availability. Evolving technology/cellular networks/vehicle capability may limit functionality and prevent operation of connected features. Connected service excludes Wi-Fi hotspot. FordPass App, compatible with select smartphone platforms, is available via download. Message and data rates may apply. **5.** Requires active data service and compatible software. **6.** Commands may vary by phone and Applink software. **7.** Requires active SiriusXM® services subscription.

### PUT CONTROL IN THE PALM OF YOUR HAND

Start, stop, lock and unlock your Ranger pickup from your smartphone with FordPass™ Connect and the FordPass App.<sup>4</sup> Apple Watch® user? You can start, lock and unlock the truck right from your wrist.<sup>5</sup>

### STREAM YOUR CONTENT

Connect up to 10 devices at once – inside the vehicle or up to 50' away – with 4G LTE Wi-Fi hotspot capability<sup>1</sup> and FordPass Connect.<sup>4</sup>

### COMMAND YOUR APPS

Use voice commands to control favorite apps on your paired smartphone or other mobile devices with available SYNC AppLink.<sup>®6</sup>

### FOLLOW ITS LEAD

Get information on traffic delays, alternate route suggestions, weather conditions, gas stations and more<sup>7</sup> with the available Navigation System.

### CHANGE IT UP

Enjoy available compatibility with Apple CarPlay<sup>®3</sup> for your iPhone<sup>®</sup> or Android Auto<sup>™3</sup> for your Android<sup>™</sup> smartphone.





# CONFIDENCE.

## FORD CO-PILOT360™ TECHNOLOGY.

From the boat launch to the highway, we can all use more confidence at the wheel. That's why Ranger® trucks offer an extensive, well-rounded collection of standard and available driver-assist technologies. These advanced features are about supplementing your driving skills. Helping you feel confidently in command on the road.



### FORD CO-PILOT360

Changing lanes, hitching up your trailer and more. This collection of standard and available features is designed to help make driving easier:

- STANDARD PRE-COLLISION ASSIST WITH AUTOMATIC EMERGENCY BRAKING
- STANDARD REAR VIEW CAMERA WITH DYNAMIC HITCH ASSIST
- AVAILABLE BLIS® (BLIND SPOT INFORMATION SYSTEM) WITH TRAILER COVERAGE AND CROSS-TRAFFIC ALERT
- AVAILABLE LANE-KEEPING SYSTEM
- AVAILABLE AUTO HIGH-BEAM HEADLAMPS

FEATURES ABOVE ARE STANDARD ON XLT AND LARIAT™

### AVAILABLE TECHNOLOGY

Towing a trailer, maneuvering in and out of tight spaces, and so much more. You can get help from these features:

- STANDARD HILL START ASSIST
- STANDARD TRAILER SWAY CONTROL
- AVAILABLE ADAPTIVE CRUISE CONTROL
- AVAILABLE FORWARD AND REVERSE SENSING SYSTEMS
- AVAILABLE RAIN-SENSING WINDSHIELD WIPERS
- AVAILABLE TRAIL CONTROL™
- AVAILABLE VOICE-ACTIVATED TOUCHSCREEN NAVIGATION SYSTEM

XLT SUPERCREW® 4x4. Rapid Red Metallic Tinted Clearcoat.<sup>2</sup> Available Trailer Tow Package. Available equipment.

1. Driver-assist features are supplemental and do not replace the driver's attention, judgment and need to control the vehicle. It does not replace safe driving. See owner's manual for details and limitations. 2. Additional charge.

FORD  
DEALER ePROCESS





XL

STX Special Edition and FX4 Off-Road Packages.



XLT

Sport Appearance Package. Available and aftermarket upfit equipment.



LARIAT™

Black Appearance and FX4 Off-Road Packages.

SEE NEXT PAGE FOR FULL LIST OF AVAILABLE PACKAGES AND CONTENT



STANDARD



CHROME APPEARANCE PACKAGE



STX™ APPEARANCE PACKAGE



STX APPEARANCE & FX2 PACKAGES



STX SPECIAL EDITION & FX4™ OFF-ROAD PACKAGES



STANDARD



CHROME APPEARANCE PACKAGE



SPORT APPEARANCE & FX4 OFF-ROAD PACKAGES



BLACK APPEARANCE & FX4 OFF-ROAD PACKAGES



TREMOR® OFF-ROAD PACKAGE



STANDARD



CHROME APPEARANCE & FX4 OFF-ROAD PACKAGES



SPORT APPEARANCE & FX4 OFF-ROAD PACKAGES



BLACK APPEARANCE & FX4 OFF-ROAD PACKAGES



TREMOR OFF-ROAD PACKAGE



STANDARD FEATURES

MECHANICAL & FUNCTIONAL

2.3L EcoBoost® engine with Auto Start-Stop Technology
10-speed SelectShift® automatic transmission
2-stage linear-rate leaf spring rear suspension
3.73 rear axle ratio
4-pin trailer tow wiring with ball-mounting provisions in rear bumper (for towing up to 3,500 lbs.)
4-wheel disc brakes with Anti-Lock Brake System (ABS)
18-gallon fuel tank
Coil-over-shock double-wishbone independent front suspension
Easy Fuel® capless fuel filler
Electric power-assisted steering
Fully boxed, high-strength-steel frame
Gas-pressurized front and rear shocks
Jack
Spare wheel and tire with lock and rear underframe carrier

FORD CO-PILOT360™ TECHNOLOGY

Autolamp (Automatic On/Off Headlamps)
Curve Control
Hill Start Assist
SOS Post-Crash Alert System™
Trailer Sway Control

CONNECTIVITY & ENTERTAINMENT

FordPass™ Connect¹ with 4G LTE Wi-Fi hotspot capability²

INTERIOR

12V powerpoints, 2 in front and 1 in rear
Air conditioning
Driver and front-passenger sun visors
Gauges for fuel, engine coolant temperature, tachometer, speedometer and odometer
Lockable glove box
Manual-tilt/-telescoping steering column
MyKey® technology to help encourage responsible driving
Power front windows with driver one-touch-up/-down feature
Power rear door windows (SuperCrew®)
Rear under-seat storage

EXTERIOR

Center high-mounted stop lamp (CHMSL) with cargo lamp
Daytime running lamps
Pickup box rail and tailgate moldings
Pickup box tie-down hooks
Removable tailgate with key lock
Steel front and rear bumpers
Variable-intermittent windshield wipers with washers

SAFETY & SECURITY

Personal Safety System™ for driver and front passenger includes dual-stage front airbags,³ safety belt pretensioners, safety belt energy-management retractors, safety belt usage sensors, driver's seat position sensor, crash severity sensor, restraint control module and Front-Passenger Sensing System
Front-seat side airbags³
Safety Canopy® System with side-curtain airbags³ and rollover sensor
3-point safety belts for all seating positions
AdvanceTrac® with RSC® (Roll Stability Control™)
Individual Tire Pressure Monitoring System (excludes spare)
SecuriLock® Passive Anti-Theft System

XL	XLT	LARIAT™	S: STANDARD    O: OPTIONAL    P: PACKAGED
S			<b>MECHANICAL</b> Tires – 255/70R16 BSW all-season tires
	S		Tires – 255/65R17 BSW all-season tires (4x2)
	S		Tires – 255/65R17 BSW all-terrain tires (4x4)
	S		Tires – 265/60R18 BSW all-season tires (4x2)
	S		Tires – 265/60R18 BSW all-terrain tires (4x4)
	O	O	Tires – LT265/65R17 OWL all-terrain tires⁴ (FX2 Package and FX4™ Off-Road Package)
	P	P	Tires – LT265/70R17 all-terrain tires (TREMOR® Off-Road Package)
S	S	S	Rear-wheel drive (4x2)
O	O	O	4x4 drivetrain with electronic shift-on-the-fly (ESOF) transfer case
O	O	O	Electronic-locking rear differential
O	O	O	Engine block heater
O	S	S	<b>FORD CO-PILOT360 TECHNOLOGY</b> <b>Ford Co-Pilot360:</b> ⁴ Pre-Collision Assist with Automatic Emergency Braking (AEB);⁵ Rear View Camera with Dynamic Hitch Assist;⁵ Auto High-Beam Headlamps; BLIS® (Blind Spot Information System) with Trailer Coverage and Cross-Traffic Alert; and Lane-Keeping System with Lane-Keeping Alert, Lane-Keeping Assist, and Driver Alert
S	S	S	Pre-Collision Assist with Automatic Emergency Braking (AEB)
S	S	S	Rear View Camera with Dynamic Hitch Assist⁴
O	O	S	Reverse Sensing System
	O	O	<b>Technology Package:</b> ⁴ Adaptive Cruise Control; Forward Sensing System; and Voice-Activated Touchscreen Navigation System with pinch-to-zoom capability (includes SiriusXM® Traffic and Travel Link® services with 5-year subscription⁹)
			<b>COMFORT &amp; CONVENIENCE</b> 2.3" productivity screen in instrument cluster
S			Fixed rear window with solar tint
S			Flooring – Black vinyl
S			Manual air conditioning, single zone
S	S		Day/night rearview mirror⁴
S	O	S	Auto-dimming rearview mirror⁴
S	S		Vinyl steering wheel with audio controls
	S		4.2" productivity screen in instrument cluster
	S	S	Fixed rear window with defroster
	S	S	Outside temperature display
	S	S	Overhead console with sunglasses holder
	S	S	Power door and tailgate locks with autolock
	S	S	Privacy glass on rear doors and rear window
	S	S	Remote Keyless Entry System
	S	S	Steering wheel-mounted audio and cruise controls
	O	S	Leather-wrapped steering wheel and shift knob
	O	S	Remote Start System⁴
		S	Ambient lighting
		S	Carpeted floor mats
		S	Dual 4.2" productivity screens in instrument cluster
		S	Intelligent Access with push-button start
		S	Leather door-trim inserts
		S	Universal garage door opener
O	S	S	Cruise control
P	S	S	Dual-zone electronic automatic temperature control
O	S	S	Flooring – Carpeted with carpeted floor mats
O	P	S	Manually sliding rear window with privacy glass and defroster
O	O	S	110V/150W AC power outlet on rear of center console⁴
O	O	O	Floor liners – Tray style (includes carpeted floor mats)⁴,⁷
O	O	O	Floor liners – Tray style (deletes carpeted floor mats)⁴

XL	XLT	LARIAT	
O			<b>SEATING</b> Rear seat delete (SuperCab™)
O			Vinyl-trimmed seats
S			Cloth-trimmed seats
P	S		Premium cloth-trimmed seats
	S		Leather-trimmed front seats and rear outboard leather-trimmed seats
S	S		8-way manual driver with lumbar and 6-way manual passenger seats
	S		Power, heated front seats with 8-way driver and 6-way passenger adjustability with power lumbar
S	S	S	2-passenger rear seating with removable cushions (SuperCab)
S	S	S	3-passenger rear bench seat with fold-down center armrest and 2 cupholders (SuperCrew)
			<b>CONNECTIVITY &amp; ENTERTAINMENT</b> AM/FM stereo with Bluetooth® and 4 speakers
S			SYNC® Voice Recognition System with 4.2" LCD screen in center stack, 911 Assist,® AppLink,® and 1 smart-charging USB port
P	S	S	SYNC 3 with 8" LCD capacitive touchscreen in center stack, 911 Assist, AppLink, Apple CarPlay® compatibility, Android Auto™ compatibility, and 2 smart-charging USB ports
	S	S	SiriusXM with 3-month All Access trial subscription⁶
			<b>APPEARANCE</b> Black bumpers, door and tailgate handles, fender vent surrounds, wheel-lip moldings and sideview mirror caps
S			Grille – Black mesh with Black surround
S			Mirrors – Manual-folding sideview with manual glass and integrated blind spot mirrors
S	S		Halogen headlamps
	S		Body-color bumpers and wheel-lip moldings
	S		Grille – Black mesh with Silver-painted surround
	S		Halogen fog lamps
	S		Mirrors – Manual-folding sideview with power glass
	S	S	LED taillamps
	S		Body-color door handles and sideview mirror caps
	S		Chrome fender vent surrounds
	S		Grille – Chrome bars with chrome surround
	S		LED headlamps, fog lamps, cargo lamp and taillamps
	P	S	Mirrors – Power-folding sideview with power, heated glass, integrated turn signal indicators, and security approach lamps
S	S	S	Black front tow hooks (4x4)
			<b>AVAILABLE FEATURES</b> Perimeter alarm
P	S	S	Aluminum crossbed storage toolbox⁸
O	O	O	Premium crossbed toolbox
O	O	O	Black 5" rectangular cab steps⁴
	O	O	Chrome 5" rectangular cab steps⁴ (Chrome Package)
O	O	O	Front license plate bracket (standard where required)
O	O	O	Pickup Box Extender⁸
O	O	O	SecuriCode™ keyless entry keypad
O	O	O	Splash guards⁴
O	O	O	Tonneau cover – Hard-folding⁸
O	O	O	Tonneau cover – Retractable⁸
O	O	O	Tonneau cover – Soft-folding⁸
O	O	O	Tough Bed® spray-in bedliner⁴

XL	XLT	LARIAT	
O	O	O	<b>FUNCTIONAL PACKAGES</b> <b>Bed Utility Package:</b> ⁴ plastic drop-in bedliner and 12V in-bed powerpoint
O	O	O	<b>FX2 Package</b> (4x2; requires STX™ Package on XL):⁴ off-road tuned suspension, electronic-locking rear differential, exposed front tow hooks, OWL all-terrain tires, FX2 box decals, and off-road display in instrument cluster productivity screen
O	O	O	<b>FX4 Off-Road Package</b> (4x4; requires STX Package on XL):⁴ off-road tuned suspension, electronic-locking rear differential, OWL all-terrain tires, exposed steel bash plate, skid plates for fuel tank, transfer case/steering gear and radiator, FX4 Off-Road box decals, Terrain Management System;™ Trail Control;™ and off-road display in instrument cluster productivity screen
O	O	O	<b>Trailer Tow Package</b> (required for towing up to 7,500 lbs.): 4-pin/7-pin wiring harness, and Class IV trailer hitch receiver
	O	O	<b>TREMOR Off-Road Package</b> (SuperCrew, requires 4x4):⁴ TREMOR box decal; Black exposed steel bash plate; painted front fender gills; floor liners (tray-style); Black 2-bar style grille with Red accent nostrils and Magnetic surround; Magnetic wheel arch flare; Black off-road hoop steps; 17" Magnetic-painted aluminum wheels; LT265/70R17 all-terrain tires; electronic-locking rear differential; off-road display in instrument cluster; off-road tuned suspension with FOX™ 2.0 monotube dampers with rear piggyback reservoirs; removable front air dam; Terrain Management System; Trail Control; rear tow hooks; skid plates; 6 upfitter switches; and vinyl-trimmed front seats with Miko® sueded cloth inserts with 8-way manual driver-seat adjust with manual lumbar and 6-way manual passenger-seat adjust (XLT), or leather-trimmed, heated front seats with Miko sueded cloth inserts with 8-way power driver-seat adjust with power lumbar and 6-way power passenger-seat adjust with power lumbar (LARIAT)

AVAILABLE EQUIPMENT GROUPS & TRIM PACKAGES

XL

**Equipment Group 101A:** cruise control + power door and tailgate locks with autolock + Remote Keyless Entry System + perimeter alarm + manual-folding sideview mirrors with power glass + SYNC + 6 audio speakers + day/night rearview mirror

**Chrome Appearance Package:**⁴ chrome bumpers, halogen fog lamps, and body-color wheel-lip moldings

**STX Appearance Package:**⁴ 17" Silver-painted aluminum wheels, halogen fog lamps, STX box decals, and premium Ebony cloth-trimmed seats

**STX Special Edition Package** (requires STX Package): 18" Black aluminum wheels with machined edge, dual-zone electronic automatic climate control, rear privacy glass with rear-window defroster, SiriusXM with 3-month All Access trial subscription,⁵ and SYNC 3 with Voice-Activated Touchscreen Navigation System

XLT

**Equipment Group 301A: Sport Appearance Package** (see content below) + leather-wrapped steering wheel and shift knob + auto-dimming rearview mirror + 110V/150W AC power outlet + Reverse Sensing System

**Equipment Group 302A:** includes all content of **301A** + power, heated front seats with 8-way driver and 6-way passenger adjustability with power lumbar + manual sliding rear window with defroster + power-folding sideview mirrors with power glass + Remote Start System

**Chrome Appearance Package:**⁴ 17" chrome-like PVD wheels; chrome grille surround, bumpers, front tow hooks, fender vent surrounds, door and tailgate handles, and exhaust tip; and body-color wheel-lip moldings

XLT/LARIAT

**Black Appearance Package:**⁴ Black grille with Black surround, Black grille bars (LARIAT), Black lower front fascia, 18" Black-painted aluminum wheels with Black center caps, Black front and rear FORD logo with smoked chrome surround, Black fender vent badges with Black RANGER lettering, Black sideview mirror caps, Black door-sill scuff plates with metallic RANGER lettering, 5" Black running boards, Tough Bed spray-in bedliner, and unique dark box decals on FX4 or 4x4

**Sport Appearance Package:**⁴ 17" Magnetic-painted aluminum wheels; Magnetic-painted grille surround (XLT), Magnetic-painted grille bars and surround (LARIAT); Black wheel-lip moldings (XLT), Magnetic-painted wheel-lip moldings (LARIAT); Black front tow hooks; and SPORT box decals

**TREMOR Body-Side and Hood Graphics** (requires TREMOR Off-Road Package)⁹

LARIAT

**Equipment Group 501A: Technology Package** (see content under "Ford Co-Pilot360 Technology") + Remote Start System + B&O™ Sound System with HD Radio™ Technology and 10 speakers + Rain-Sensing Windshield Wipers

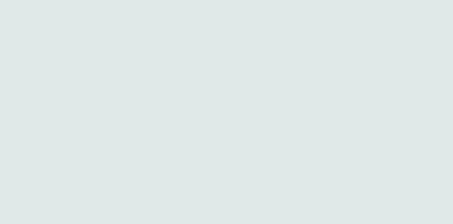
**Chrome Appearance Package:**⁴ chrome grille and fender vent surrounds; 18" chrome-like PVD wheels; and chrome bumpers, front tow hooks, door and tailgate handles, sideview mirror caps and exhaust tip

1. FordPass Connect, the FordPass App, and complimentary Connected Service are required for remote features (see FordPass Terms for details). Connected service and features depend on compatible AT&T network availability. Evolving technology/cellular networks/vehicle capability may limit functionality and prevent operation of connected features. Connected service excludes Wi-Fi hotspot. FordPass App, compatible with select smartphone platforms, is available via download. Message and data rates may apply. 2. Wi-Fi hotspot includes complimentary wireless data trial that begins upon AT&T activation and expires at the end of 3 months or when 3GB of data is used, whichever comes first, but cannot extend beyond the complimentary subscription period for remote features. To activate, go to [www.att.com/ford](http://www.att.com/ford). 3. Always wear your safety belt and follow airbag warning label instructions. 4. Restrictions may apply. See your dealer for details. 5. Standard. 6. Trial length and service availability may vary by model, model year or trim. All SiriusXM services require a subscription, each sold separately by SiriusXM after the trial period. Service will automatically stop at the end of your trial unless a subscription is purchased. See the SiriusXM Customer Agreement at [www.siriusxm.com](http://www.siriusxm.com) for complete terms. Some services and features are subject to device capabilities and location availability. All fees, content and features are subject to change. 7. Do not place additional floor mats or any other covering on top of the original floor mats. 8. Ford Licensed Accessory. 9. Available only on Oxford White, Shadow Black, Iconic Silver, Cactus Gray, Carbonized Gray and Velocity Blue exteriors.





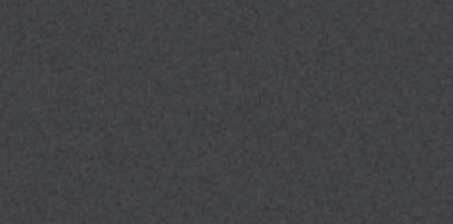
EXTERIORS



1 Oxford White



4 Velocity Blue Metallic



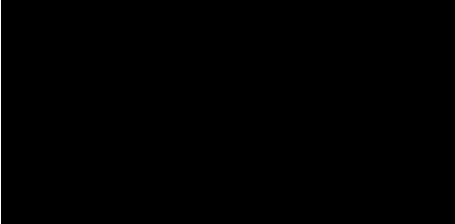
7 Carbonized Gray Metallic



2 Race Red



5 Cactus Gray



8 Shadow Black



3 Iconic Silver Metallic



6 Rapid Red Metallic Tinted Clearcoat<sup>1</sup>



9 Cyber Orange Metallic Tri-coat<sup>1</sup>

SEATING SURFACES

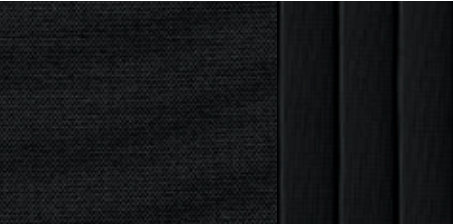
XL



Ebony Vinyl / 1–4, 7–8

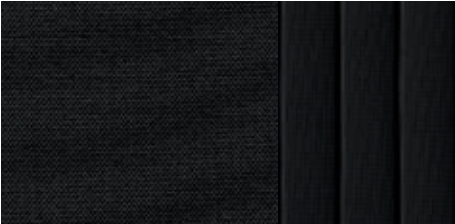


Ash Black Cloth / 1–4, 7–8



Premium Ebony Cloth / 1–8  
(STX™ and STX Special Edition Packages)

XLT



Premium Ebony Cloth / 1–9



Premium Medium Stone Cloth / 1–8

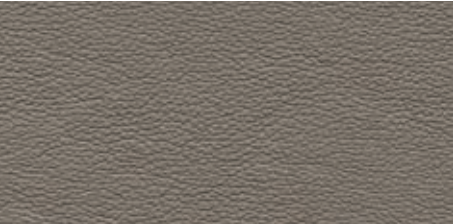


Ebony Vinyl with Miko® Sueded Cloth Inserts / 1–9  
(TREMOR® Off-Road Package)

LARIAT™



Ebony Leather / 1–9



Medium Stone Leather / 1–8



Ebony Leather with Miko Sueded Cloth Inserts / 1–9  
(TREMOR Off-Road Package)

WHEELS



16" Silver Steel  
XL Standard



17" Chrome-Like PVD  
XLT Chrome Package Included



17" Magnetic-Painted Aluminum  
TREMOR Off-Road Package Included



18" Machined Aluminum  
with Stealth Gray-Painted Pockets  
LARIAT Standard



18" Black Aluminum  
with Machined Edge  
STX Special Edition Package Included



17" Silver-Painted Aluminum  
XLT Standard  
STX Package Included



17" Magnetic-Painted Aluminum  
Sport Package Included



18" Chrome-Like PVD  
XLT Chrome Package Optional  
LARIAT Chrome Package Included



18" Machined Aluminum  
with Magnetic-Painted Pockets  
Sport Package Optional<sup>2</sup>



18" Black-Painted Aluminum  
with Black Center Caps  
Black Appearance Package Included

DIMENSIONS

	SuperCab™ 4x2/4x4	SuperCrew® 4x2/4x4	TREMOR SuperCrew 4x4
Exterior (in.)			
Height	70.7/71.1	71.1/71.5	75.4
Width – Excluding mirrors – Including mirrors – Mirrors folded	73.3 85.8 77.8	73.3 85.8 77.8	73.3 85.2 77.8
Length	210.8	210.8	210.7
Wheelbase	126.8	126.8	126.8
Ground clearance (min.)	8.4/8.9	8.4/8.9	9.7
Overhang – Front – Rear	35.8 48.2	35.8 48.2	35.8 48.1
Cargo Box (in.)			
Inside height	20.8	20.9	20.9
Length at floor	72.8	61.0	61.0
Width at wheelhouse	44.8	44.8	44.8
Maximum width at floor	61.4	61.4	61.4
Volume (cu. ft.)	51.8	43.3	43.3

	SuperCab Front/Rear	SuperCrew Front/Rear	TREMOR SuperCrew Front/Rear
Interior (in.)			
Head room	39.8/35.9	39.8/38.3	39.8/38.3
Leg room (max.)	43.1/30.4	43.1/34.5	43.1/34.5
Hip room	55.8/55.3	55.8/53.5	55.8/53.5
Shoulder room	56.6/55.2	56.7/56.3	56.7/56.3
Passenger volume (cu. ft.)	89.2	97.6	97.6

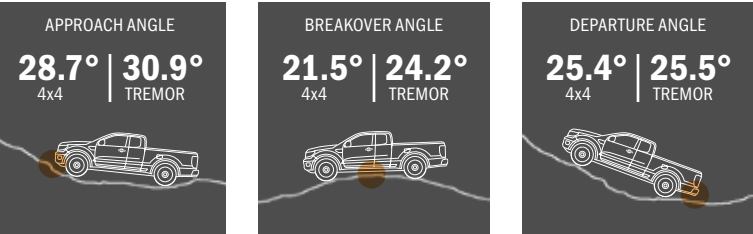
WEIGHT RATINGS <sup>3</sup>

	SuperCab 4x2/4x4	SuperCrew 4x2/4x4	TREMOR SuperCrew 4x4
Maximum (lbs.)			
GVWR	6,050/6,050	6,050/6,050	6,050
Payload	<b>1,860</b> /1,650	1,770/1,560	1,430
GCWR	12,150/12,400	12,250/12,500	12,500
Towing	7,500/7,500	7,500/7,500	7,500

Best-in-Class shown in **bold**.

SUPERCAB  
6' Box

SUPERCREW  
5' Box



Colors are representative only. See your dealer for actual paint/trim options. **1.** Additional charge. **2.** Restrictions may apply. See your dealer for details. **3.** Weight ratings shown are for properly equipped vehicle with available Trailer Tow Package, required equipment and a 150-lb. driver. Weight of additional options, equipment, passengers and cargo must be deducted from this weight. For additional information, see your Ford Dealer.





LARIAT SuperCrew® 4x4 with available FX4 Off-Road and Sport Appearance Packages in Cyber Orange Metallic Tri-coat<sup>1</sup> accessorized with Aeroskin® hood protector,<sup>2</sup> chrome front tow hooks, side window deflectors, black rectangular running boards, fender flares,<sup>2</sup> 18" black machined-face aluminum wheels, Embark LS tonneau/bed cover,<sup>2</sup> low-profile bed rack<sup>2,3</sup> (including heavy-duty crossbars), and extra-large basket with net<sup>2,3</sup>



Bed mat<sup>2</sup>



Floor liners



Bed extender<sup>2</sup>



Dash cam systems<sup>2</sup>



## EPA-ESTIMATED RATINGS

Actual mileage will vary.

### 4x2

21 CITY  
MPG

26 HWY  
MPG

23 COMB  
MPG

### 4x4

20 CITY  
MPG

24 HWY  
MPG

22 COMB  
MPG

### TREMOR® 4x4

19 CITY  
MPG

19 HWY  
MPG

19 COMB  
MPG

Available and aftermarket upfit equipment shown.

### New Vehicle Limited Warranty.

We want your Ford Ranger ownership experience to be the best it can be. Under this warranty, your new vehicle comes with 3-year/36,000-mile bumper-to-bumper coverage, 5-year/60,000-mile Powertrain Warranty coverage, 5-year/60,000-mile safety restraint coverage, and 5-year/unlimited-mile corrosion perforation (aluminum panels do not require perforation) coverage – all with no deductible. Please ask your Ford Dealer for a copy of this limited warranty.

**Ford Credit.<sup>®</sup>** Get the ride you want. Whether you plan to lease or buy, Ford Credit has the option that's right for you. Ask your Ford Dealer for details or visit us online at [ford.com/finance](https://ford.com/finance).

**Roadside Assistance.** Covers your vehicle for 5 years or 60,000 miles, so you have the security of knowing that help may be only a phone call away should you run out of fuel, lock yourself out of the vehicle or need a winch back to a paved road, a battery jump start or towing. Your Ford Dealer can provide complete details on all of these advantages.

**Ford Protect™ Extended Service Plans.** Whether you purchase or lease your Ford vehicle, insist on genuine Ford Protect extended service plans. Ford Protect has a variety of plans to give you peace-of-mind protection whether you want vehicle component or maintenance coverage. Plus, they are fully backed by Ford and honored at all Ford dealerships in the U.S., Canada and Mexico. When you visit your dealer, insist on genuine Ford Protect extended service plans.

**Ford Insure.** Insurance that lets you earn discounts for safe driving, offering a maximum discount of 40% off your auto insurance. Ford Insure works with your 2021 Ranger to gauge driving habits and calculate a discount based on how you drive. Visit [www.fordinsure.com](https://www.fordinsure.com) to learn more.

*American Road Services Company LLC (a Ford affiliate) is the licensed insurance agency offering Ford Insure and is underwritten by Nationwide Mutual Insurance Company and affiliates. Home Office: Columbus, OH. Ford Motor and Ford Credit are not insurance companies or agents. Subject to underwriting guidelines, review and approval. Details and availability varies; program criteria differ in California. Discounts do not apply to all coverage elements; actual savings vary by state, coverage selections, rating factors and policy changes.*

**Ford Original Accessories.** They're warranted for whichever provides you the greatest benefit: 24 months/unlimited mileage, or the remainder of your Bumper-to-Bumper 3-year/36,000-mile New Vehicle Limited Warranty.

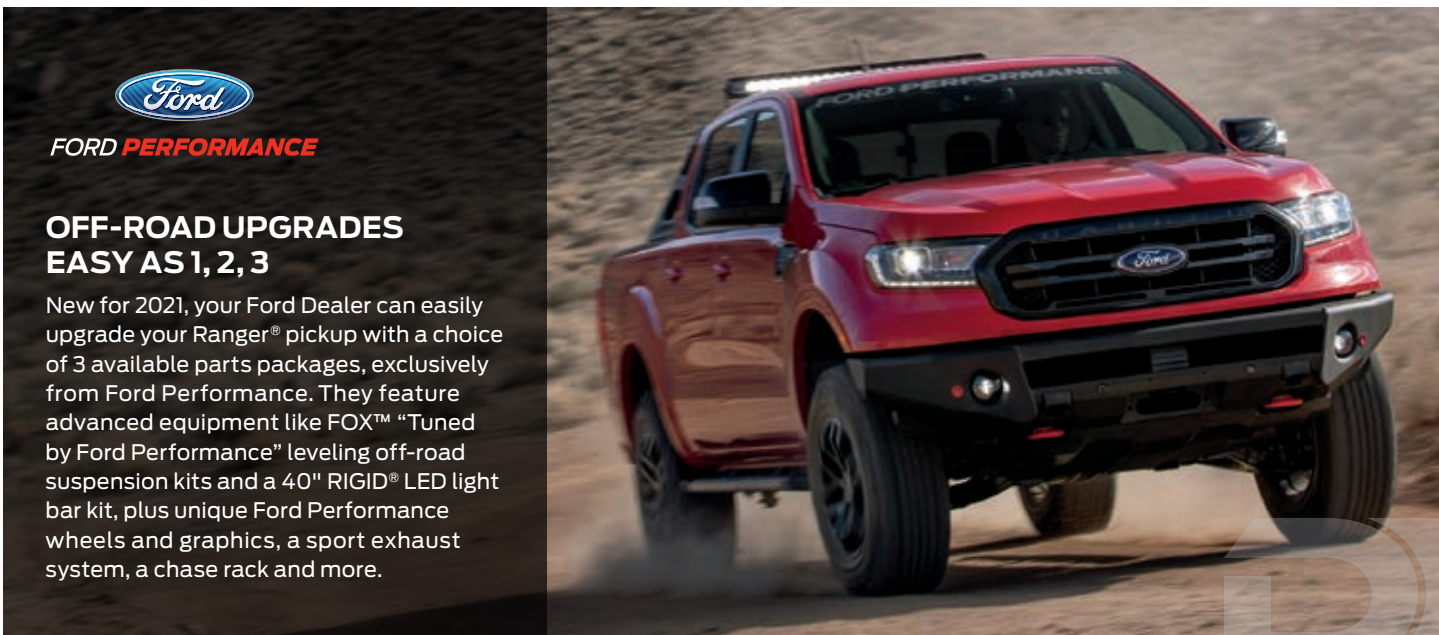
**Ford Licensed Accessories (FLA)** are warranted by the accessory manufacturer's warranty. FLA are designed and developed by the accessory manufacturer and have not been designed or tested to Ford Motor Company engineering requirements. Contact your Ford Dealer for details and/or a copy of all limited warranties.

**1.** Additional charge. **2.** Ford Licensed Accessory. **3.** Consult owner's manual for details on roof-rack load limits.

Ford and Oval Device, 911 Assist, AdvanceTrac, AppLink, BLIS, Built Ford Tough, Easy Fuel, EcoBoost, Ford Co-Pilot360, Ford Credit, Ford Protect, FordPass, FX4, LARIAT, MyKey, Personal Safety System, Ranger, Roll Stability Control, RSC, Safety Canopy, SecuriCode, SecuriLock, SelectShift, SOS Post-Crash Alert System, STX, SuperCab, SuperCrew, SYNC, Terrain Management System, Tough Bed, Trail Control, TREMOR and related marks are trademarks of Ford Motor Company.

Apple, Apple CarPlay, Apple Watch, iPhone and Siri are trademarks of Apple Inc., registered in the U.S. and other countries. BANG & OLUFSEN and B&O are registered trademarks of Bang & Olufsen Group. Licensed by Harman Becker Automotive Systems Manufacturing Kft. All rights reserved. FOX Racing Shox is a trademark of FOX FACTORY INC. Google, Android, Android Auto and Google Play are trademarks of Google LLC. Requires the Android Auto app on Google Play and an Android compatible smartphone running Android™ 5.0 or higher. HD Radio is a proprietary trademark of iBiquity Digital Corporation. Kelley Blue Book is a registered trademark of Kelley Blue Book Co., Inc. Miko is a registered trademark of Miko s.r.l. SiriusXM and all related marks and logos are trademarks of SiriusXM Radio Inc. The Bluetooth word mark is a trademark of the Bluetooth SIG, Inc. Yakima is a registered trademark of Yakima Products Inc.

Comparisons based on competitive models (class is Midsize Pickups), publicly available information and Ford certification data at time of release. Vehicles may be shown with optional and aftermarket equipment. Features may be offered only in combination with other options or subject to additional ordering requirements/limitations. Dimensions and capacity ratings shown may vary due to optional features and/or production variability. Information is provided on an "as is" basis and could include technical, typographical or other errors. Ford makes no warranties, representations, or guarantees of any kind, express or implied, including but not limited to, accuracy, currency, or completeness, the operation of the information, materials, content, availability, and products. Ford reserves the right to change product specifications, pricing and equipment at any time without incurring obligations. Your Ford Dealer is the best source of the most up-to-date information on Ford vehicles. Body manufacturers are responsible for compliance certification of the completed vehicle.



FORD PERFORMANCE

## OFF-ROAD UPGRADES EASY AS 1, 2, 3

New for 2021, your Ford Dealer can easily upgrade your Ranger® pickup with a choice of 3 available parts packages, exclusively from Ford Performance. They feature advanced equipment like FOX™ "Tuned by Ford Performance" leveling off-road suspension kits and a 40" RIGID® LED light bar kit, plus unique Ford Performance wheels and graphics, a sport exhaust system, a chase rack and more.





From day one, we had the future in mind. And over 117 years later, we continue that tradition of innovation with Ford Co-Pilot360™ helping push us closer to autonomous driving, the latest generation of SYNC® to communicate untethered and our first fully electric vehicle – Ford Mustang Mach-E®.

We've always had our mind on the future. Now we're building it.

21RGRPDFR1

©2020 Ford Motor Company

## The FordPass™ App



Meet FordPass. The app that puts your ownership experience in the palm of your hand.



Access complimentary remote features like start/stop, lock/unlock, schedule a start, locate vehicle and vehicle status check when your vehicle is equipped with FordPass Connect<sup>1</sup>



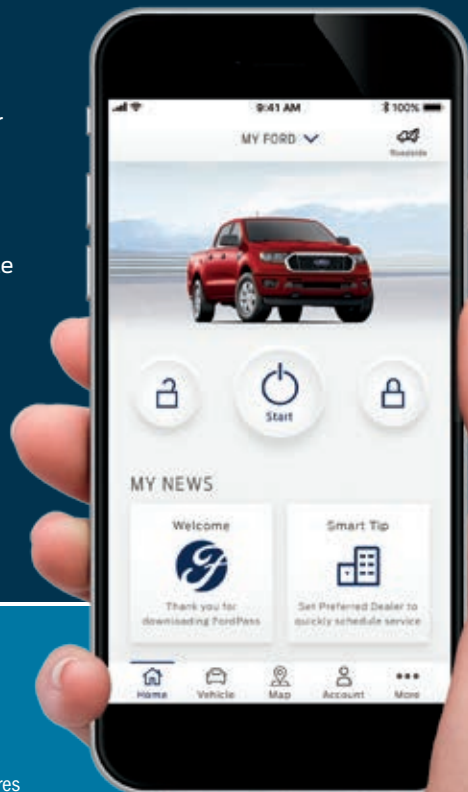
With FordPass Rewards, earn Points to use toward complimentary maintenance<sup>2</sup> or accessories when you buy or lease a new Ford vehicle



Earn 10 FordPass Rewards Points for every \$1 spent on vehicle service and maintenance



Get help on the road with 24/7 Roadside Assistance<sup>3</sup>



**Download the FordPass App today.**

**1.** FordPass Connect, the FordPass App, and complimentary Connected Service are required for remote features (see FordPass Terms for details). Connected service and features depend on compatible AT&T network availability. Evolving technology/cellular networks/vehicle capability may limit functionality and prevent operation of connected features. Connected service excludes Wi-Fi hotspot. FordPass App, compatible with select smartphone platforms, is available via download. Message and data rates may apply. **2.** Modem must be activated within 60 days of purchase through the FordPass App on a smartphone and remain active for at least 6 months after activation. Buyers of non-modem-equipped vehicles will also receive Points for complimentary maintenance after enrollment. Visit a participating dealer for details or go to [FordPassRewards.com](https://fordpassrewards.com). **3.** Roadside assistance is included for certain owners and available to everyone for a per-service fee.